

COUNTY OF EL DORADO

330 Fair Lane
Placerville, CA 95667
(530) 621-5390
(530) 622-3645 Fax

Kim Dawson
Clerk of the Board



BOARD OF SUPERVISORS

JOHN HIDAHL
District I
SHIVA FRENTZEN
District II
BRIAN K. VEERKAMP
District III
LORI PARLIN
District IV
SUE NOVASEL
District V

April 28, 2020

The Honorable Gavin Newsom
Governor of California
State Capitol
Sacramento, CA 95814

Dear Governor Newsom:

As we are all aware, over the past few weeks the residents of California have done an outstanding job in slowing the spread of COVID-19. While those actions were absolutely necessary, we believe that the actions taken by El Dorado County have put us in a position to begin reopening our economy safely and we are requesting your permission to do so.

Since the beginning of this crisis, El Dorado County took a community wide approach to preventing the spread of COVID-19. Specifically, we put systems in place to ensure county government, including the Public Health Officer and Sheriff's Office, education, our two hospitals, non-profits and business community, worked in partnership to prevent the spread of COVID-19. Enclosed for your review are documents summarizing these efforts (*Community Resources/Workgroup Status Report*).

As of April 27, El Dorado County has been successful in preventing the spread of the virus as evidenced by having a total of 42 confirmed cases, for a per capita infection rate of 23 cases per 100,000 people, only five active cases at this time and only 2.4 percent of all tests (>1700) being positive. In addition, over the past 14 days the number of active cases has remained flat.

The efforts we have taken are consistent with your six indicators, including proactive efforts to protect vulnerable populations such as our older adults and homeless, our hospitals are confident they have systems in place to handle surges, and collaborative discussions between our Public Health Department and school and child care facilities will continue into the next school year. With the assistance of your office, beginning in early May, El Dorado County's testing capacity will increase to approximately 300 tests per day. Based on our population, this number of tests is proportionally consistent with your goal of conducting 60,000–80,000 tests per day statewide.

Based on the overall rural nature of our county and the collaborative efforts of the partners identified above, we believe the greatest risk of COVID-19 will occur when statewide travel orders are lifted and tourists resume traveling to our region. However, this is *not* a reason to

prevent our business from reopening in a safe manner based on direction and guidance from our Public Health Officer. Those guiding documents are also enclosed for your review (*Reopening Guidelines*).

While implementing the stay-at-home requirements in our county were necessary, we also recognize the significant financial impact this is now placing on our entire community, especially our small business owners. Due to the efforts taken by our county, we have clearly demonstrated the ability to protect our residents from COVID-19 and we are requesting your approval to allow for the limited, phased reopening of our economy that allows for the eventual safe return of El Dorado County to normal operations and activities in a safe manner, as well as the ability of the Health Officer to immediately reinstate more restrictive guidelines if El Dorado County begins to see an increase in the number of positive cases beyond what our local health system can handle.

Upon approving this phased approach, the following requirements will be put into place for the next phase:

Individuals:

- Anyone who is feeling ill should stay home and isolate from others, seeking medical care if necessary.
- Everyone should continue following physical distancing, hand and surface sanitization, covering coughs and sneezes, and face covering guidelines.
- Vulnerable (high risk) individuals should continue to stay at home.

Individuals and Groups

- Gatherings of people from different households where social distancing cannot be accommodated should still be avoided.
- Visits to vulnerable individuals in congregate settings limited to essential visits only.
- Non-essential travel is not allowed.

Work and Business

- All workplaces to have policies to ensure that sick employees do not come to work and that they go home immediately if they become ill at work.
- Use of all spaces to be limited in occupancy at all times to meet the 6-foot distancing requirements.
- Other non-pharmaceutical interventions shall be applied as applicable (hand and surface sanitation, use of face coverings, etc.) per State guidance.
- Protection and accommodations should be provided to employees who are high risk for COVID-19.
- Businesses eligible to operate are encouraged to limit the number of staff and clients in the building at a given time such that physical distancing and sanitation requirements can be maintained in accordance with all guidelines and regulations.
- Operation of nonessential businesses that can maintain physical distance through the entire transaction, that are non-contact related is permitted.
- Guidelines for decreasing the opportunity for spread of COVID-19 include:

- Encouraging local businesses to use phone and electronic ordering in lieu of in-store shopping.
- Offering curbside pick-up/home delivery of goods.
- Marking floors and seating to encourage 6-foot spacing between people (customers, employees, others).
- Allowing limited numbers of people into business at any given time – using standards for maximum customers.
- Establishing appointment systems and staggering appointment times.

Outdoor Recreation

- Acceptable to the extent allowed by the State’s order.
- Physical distancing required.
- Equipment/surfaces handled/touched by different people to be sanitized between users.
- Should occur near the participant’s place of residence; travel outside one’s own community for recreation is discouraged.

We thank you for your consideration of our request to reopen the economy in El Dorado County under local orders which are developed in concurrence with the County Public Health Officer, and support of the CEOs of the two hospitals and managers of the two incorporated Cities, Placerville and South Lake Tahoe, and we request a response by Friday, May 8, 2020.

Sincerely,



Brian Veerkamp, Chair
Board of Supervisors



Nancy Williams, MD
Public Health Officer

Attachments:

- Reopening Guidelines
- Community Resources/Workgroups Status Report

- c. Senator Brian Dahle
Assemblyman Frank Bigelow
Assemblyman Kevin Kiley
Brad Kilger, Interim City Manager, South Lake Tahoe
Cleve Morris, City Manager, Placerville
Siri Nelson, CEO, Marshall Hospital
Dr. Clint Purvance, CEO, Barton Memorial Hospital
Dr. Ed Manansala, County Superintendent of Schools



Reopening Guidelines: All Businesses and Employers





Physical Distancing Guidelines

Signage

Place a sign at each public entrance of the facility to inform all employees and patrons that they should:

- Avoid entering the facility if they have a cough or fever;
- Maintain a minimum six-foot distance from one another;
- Sneeze and cough into one's elbow or a cloth/tissue, sanitize hands and properly dispose of tissues;
- Do not engage in any unnecessary physical contact;
- Wear a face covering.

Post a copy of the attached Physical Distancing Guidelines flyer at each public entrance to the facility.

Measures to Protect Employee Health

- Consider allowing some non-essential employees who can carry out their work duties from home to continue to do so
- Employees should not to come to work if sick.
- Symptom checks should be conducted before employees may enter the work space.
- All desks or individual work stations are separated by at least six feet or by partitions (e.g. cubicle walls).
- Breakrooms, bathrooms, and other common areas should be disinfected frequently.
- Hand sanitizer effective against COVID-19 should be available to all employees.
- Soap and water should be available to all employees.
- Encourage employees and patrons to wear face coverings that covers the nose and mouth at all times when in the facility. Provide such face coverings to employees if needed.

Measures to Prevent Crowds from Gathering

- Limit the number of patrons in the facility at any one time which allows for patrons and employees to easily maintain at least six- foot distance from one another at all practicable times.
- Post an employee at the door to ensure that the maximum number of patrons in the facility set forth above is not exceeded.
- Place per-person limits on goods that are selling out quickly to reduce crowds and lines.





Physical Distancing Guidelines

Measures to Keep People at Least Six Feet Apart

- Placing signs outside the store reminding people to be at least six feet apart, including when in line.
- Placing tape or other markings at least six feet apart in patron line areas inside the facility and on sidewalks at public entrances with signs directing patrons to use the markings to maintain distance.
- Separate order areas from delivery areas to prevent patrons from gathering.
- All employees need to maintain at least six feet distance from patrons and from each other, except employees may momentarily come closer when necessary to accept payment, deliver goods or services, or as otherwise necessary.

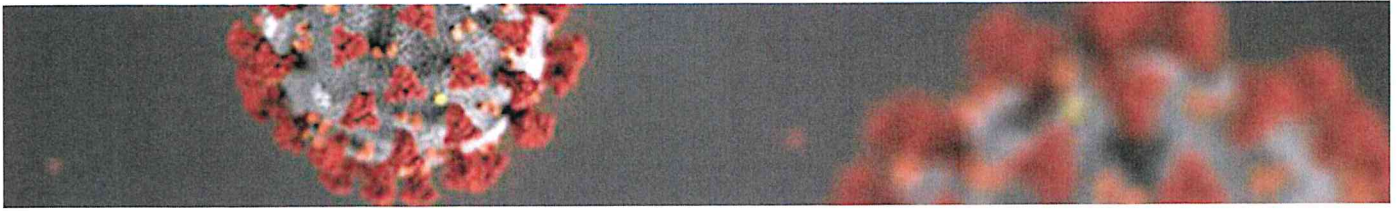
Measures to Prevent Unnecessary Contact

- Preventing patrons from self-serving any items that are food-related. Lids for cups and food-bar type items are provided by staff and not available for self-service.
- Bulk-item food bins are not available for patron self-service use.
- Do not permit patrons to bring their own bags, mugs, or other reusable items.
- Providing for contactless payment systems or, if not feasible, sanitizing payment systems regularly.

Measures to Increase Sanitization

- Disinfecting wipes that are effective against COVID-19 are available to employees and patrons.
- Employee(s) assigned to disinfect frequently touched items regularly.
- Hand sanitizer, soap and water, or effective disinfectant is available to the public at or near the entrance of the facility, at checkout counters, and anywhere else inside the store or immediately outside where patrons have direct interactions.
- Disinfecting all payment portals, pens, and styluses after each use.





Physical Distancing Guidelines: Restaurants and Bars

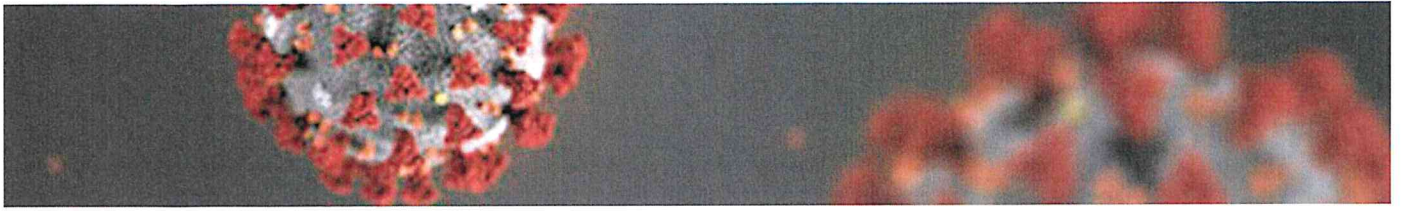




Physical Distancing Guidelines: Restaurants and Bars

- No standing or sitting at a bar
- Table service shall only occur with separation (6') between tables.
- Limit events designed to draw in large crowds (trivia nights, live music, etc) keep these events small and within space/seating restrictions.
- Assure employers have systems in place to assure sick employees do not prepare food or serve food in accordance with guidance from the CA Retail Food Code. Illness or outbreaks should be reported to the local health department and the State Department of Public Health within 24 hours.
- Adhere to the "Best Practices for Retail Food Stores, Restaurants, and Food Pick-Up/Delivery Services During the COVID-19 Pandemic" suggestions from the Food and Drug Administration (FDA)
- Cleaning and sanitizing (with EPA registered disinfectant) practices for tables and chairs should occur between each seating.
- Handling and laundering linens can increase chances of exposure. Use disposable napkins, and do not use tablecloths unless they are cleanable/wipeable.
- Condiments (salt/pepper/catsup/sweetener packets etc) should not be pre-set on dining tables; items should be provided upon request only.
- Encourage hand washing for patrons (signage, table tents), provide hand sanitizer stations if customer sinks are limited (such as in single-occupant restrooms)
- Strict hand washing adherence should occur for employees to include: food preparation, serving, handwashing and host/cashier persons.
- Ready-to-eat food should be handled while wearing gloves (salad, sandwich ingredients etc.)
- Utensils designed for reuse shall be cleaned using equipment that complies with warewashing equipment codes.
- Do not allow self-service food buffets; utilize trained servers to serve food from a buffet. This should include salad bars, common beverage dispensers, continental breakfasts and other self-serve food lines.
- Limit "help yourself" food items such as bar snacks, mints, unwrapped toothpicks etc.
- Implement a strict no-hand shaking/hug/close contact policy between employees and guests.
- Increase cleaning frequency of high touch points such as elevator controls, door handles, menus, faucets etc.





Guidance for Cloth Face Coverings





Guidance for Cloth Face Coverings

How to Wear a Cloth Face Covering

Cloth face coverings should—

- fit snugly but comfortably against the side of the face
- be secured with ties or ear loops
- include multiple layers of fabric
- allow for breathing without restriction
- be able to be laundered and machine dried without damage or change to shape

CDC on Homemade Cloth Face Coverings

[CDC recommends](#) wearing cloth face coverings in public settings where other social distancing measures are difficult to maintain (e.g., grocery stores and pharmacies), **especially** in areas of significant community-based transmission.

CDC also advises the use of simple cloth face coverings to slow the spread of the virus and help people who may have the virus and do not know it from transmitting it to others. Cloth face coverings fashioned from household items or made at home from common materials at low cost can be used as an additional, voluntary public health measure.

Cloth face coverings should not be placed on young children under age 2, anyone who has trouble breathing, or is unconscious, incapacitated or otherwise unable to remove the mask without assistance.

The cloth face coverings recommended *are not* surgical masks or N-95 respirators. Those are critical supplies that must continue to be reserved for healthcare workers and other medical first responders, as recommended by current CDC guidance.

Should cloth face coverings be washed or otherwise cleaned regularly? How regularly?

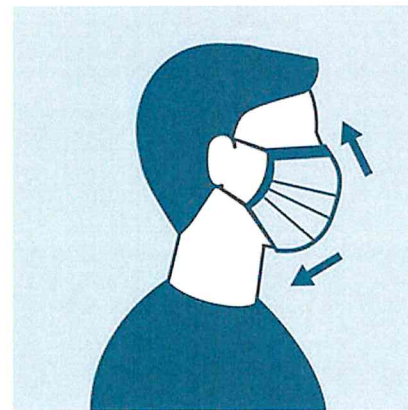
Yes. They should be routinely washed depending on the frequency of use.

How does one safely sterilize/clean a cloth face covering?

A washing machine should suffice in properly washing a face covering.

How does one safely remove a used cloth face covering?

Individuals should be careful not to touch their eyes, nose, and mouth when removing their face covering and wash hands immediately after removing.



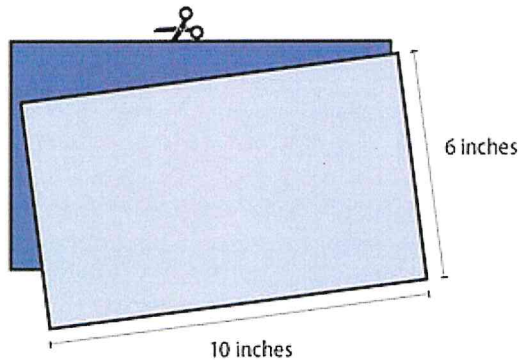
Sewn Cloth Face Covering

Materials

- Two 10"x6" rectangles of cotton fabric
- Two 6" pieces of elastic (or rubber bands, string, cloth strips, or hair ties)
- Needle and thread (or bobby pin)
- Scissors
- Sewing machine

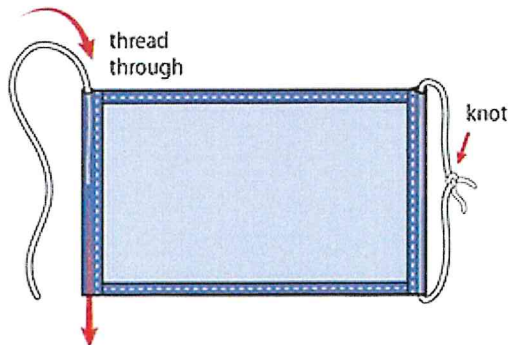
Tutorial

1. Cut out two 10-by-6-inch rectangles of cotton fabric. Use tightly woven cotton, such as quilting fabric or cotton sheets. T-shirt fabric will work in a pinch. Stack the two rectangles; you will sew the mask as if it was a single piece of fabric.

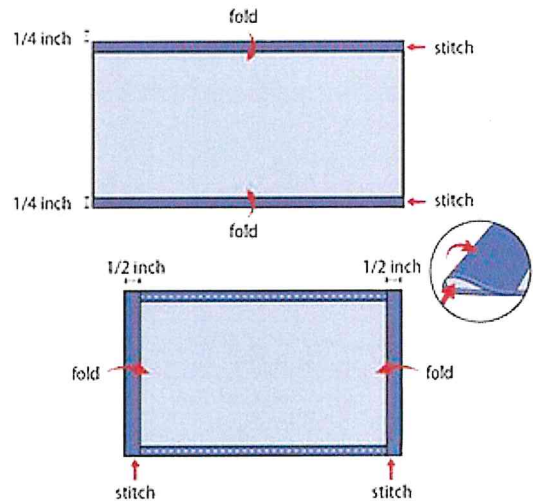


3. Run a 6-inch length of 1/8-inch wide elastic through the wider hem on each side of the mask. These will be the ear loops. Use a large needle or a bobby pin to thread it through. Tie the ends tight.

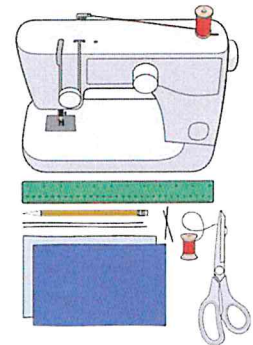
Don't have elastic? Use hair ties or elastic head bands. If you only have string, you can make the ties longer and tie the mask behind your head.



2. Fold over the long sides 1/4 inch and hem. Then fold the double layer of fabric over 1/2 inch along the short sides and stitch down.



4. Gently pull on the elastic so that the knots are tucked inside the hem. Gather the sides of the mask on the elastic and adjust so the mask fits your face. Then securely stitch the elastic in place to keep it from slipping.

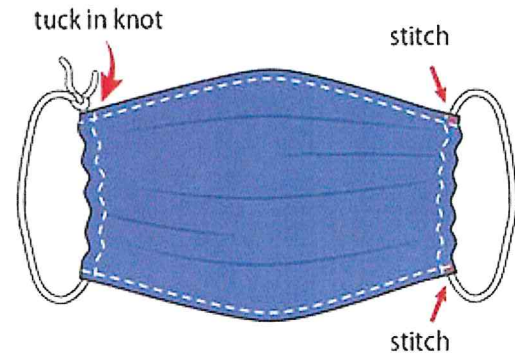
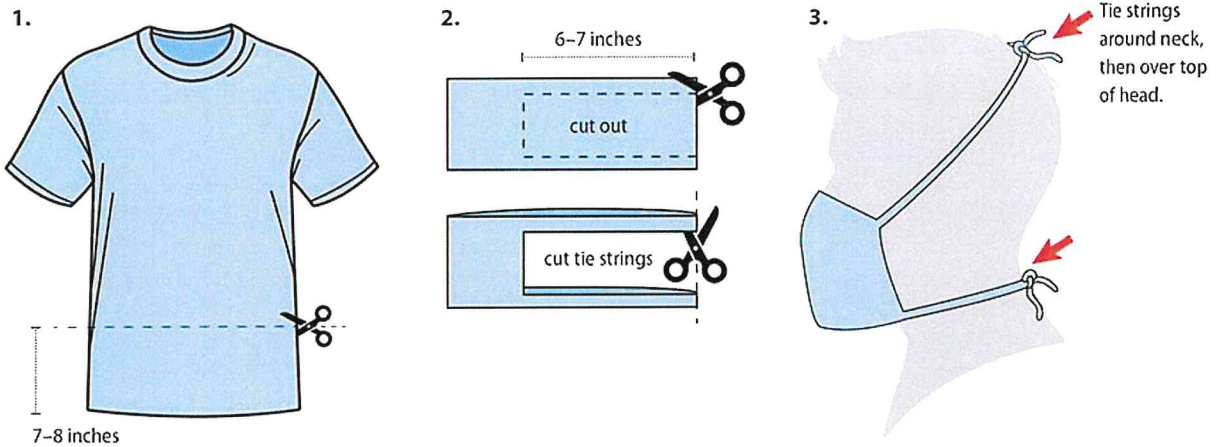


Quick Cut T-shirt Face Covering (no sew method)

Materials

- T-shirt
- Scissors

Tutorial

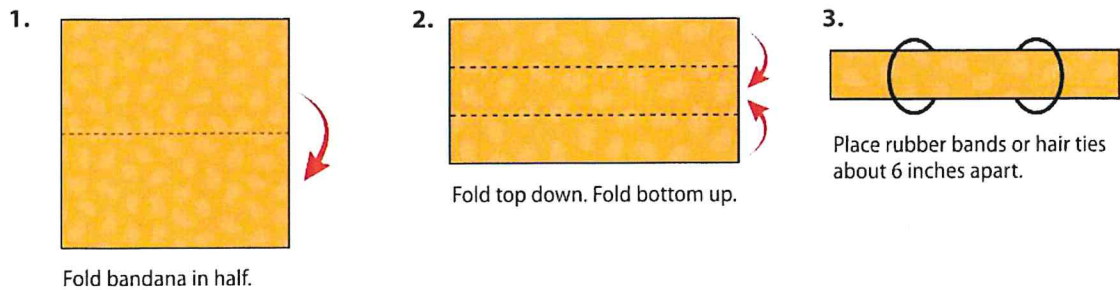


Bandana Face Covering (no sew method)

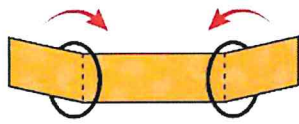
Materials

- Bandana (or square cotton cloth approximately 20"x20")
- Rubber bands (or hair ties)
- Scissors (if you are cutting your own cloth)

Tutorial

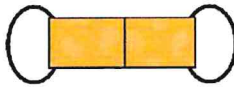


4.

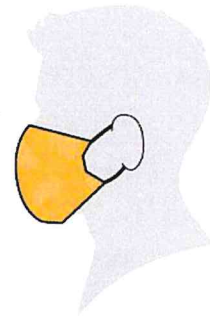


Fold side to the middle and tuck.

5.



6.





Flyers for Posting on Doors to Businesses

edcgov.us

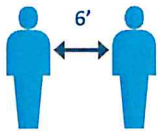


We are practicing physical distancing.

We are implementing the mandatory physical distancing protocols, as per the El Dorado County Public Health Order, effective through April 30, 2020, unless the Order is extended.



Avoid entering the facility if you have a cough or fever



Maintain 6 feet of distance between you and others



Sneeze or cough into a cloth or tissue; if not available, use your elbow



Do not shake hands or engage in any unnecessary physical contact



Consider wearing a face cover

Max # of customers allowed at one time:

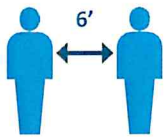


Estamos practicando el distanciamiento físico.

Estamos implementando los protocolos de distanciamiento físico obligatorios, según la Orden de Salud Pública del Condado de El Dorado, vigentes hasta el 30 de abril de 2020, a menos que la Orden se extienda.



No ingrese a las instalaciones si tiene tos o fiebre.



Mantener una distancia de 6 pies de otras personas.



Estornudar o toser en un paño o pañuelo de papel; si no está disponible, use su codo.



No se dé la mano ni participe en ningún contacto físico innecesario.



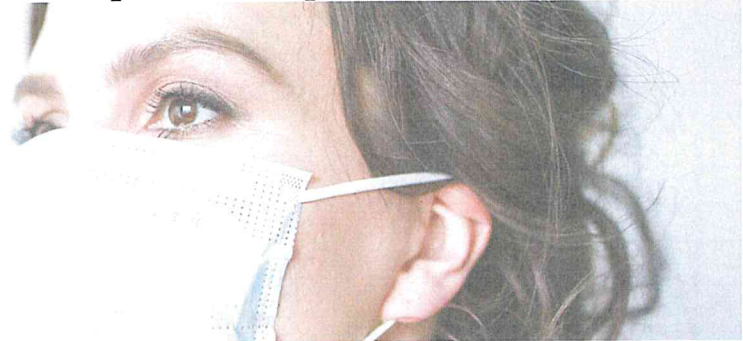
Considere usar una cubierta para la cara.

máximo de clientes permitidos a la vez:



EL DORADO COUNTY COVID-19 RESPONSE COMMUNITY PLANNING WORKGROUPS

Weekly Status Report - April 18-April 24, 2020



OLDER ADULTS

Ensuring safe services to older adults during the emergency directive to isolate at home, and reducing the social impacts of isolation.

ESSENTIAL COMMUNITY SERVICES

Connecting people to resources and coordinating community responses to essential needs during the COVID-19 emergency.

CHILD CARE

Ensuring capacity to provide quality child care for El Dorado County's emergency and essential workforce.

HOMELESSNESS

Finding immediate ways to prevent and slow the spread of COVID-19 in homeless communities, and creating plans to mitigate the impact of infection on homeless individuals and families.

WORKFORCE PROTECTION

Established to collaborate with local agency stakeholders regarding 1) consistent communication to the public and our employees, and 2) identify and discuss options to protect our private and public workforces.

GOVERNMENT FINANCE PROTECTION

Ensure government finance is ready to adapt to a changing financial climate and changing service needs using all available financial forecasting and planning experts.



[For general information on COVID-19 please go to www.edcgov.us/Government/hhsa/Pages/EDCCOVID-19.aspx](http://www.edcgov.us/Government/hhsa/Pages/EDCCOVID-19.aspx)

BUSINESS PROTECTION

Established to compile information and best practices to support our local economy in economic recovery and resilience efforts.

COMMUNICATIONS

The Purpose of the Community Public Information Officer (PIO) group is to inform and share individual communications strategies, messaging tracks, and tools to better inform the public.

WORKGROUPS WITH NO SIGNIFICANT UPDATES THIS WEEK

- Workforce Protection
- Older Adults
- Government Finance Protection

ESSENTIAL COMMUNITY SERVICES



Creating a comprehensive list of resources available to provide assistance to those with limited access to food and those who may be experiencing housing instability due to the impacts of COVID-19.

EXPANSION OF SLT RESOURCES

Several new resources have been made available in the South Lake Tahoe region to provide basic needs assistance to residents impacted by COVID-19.

UPDATED RESOURCES

The resource guide reflects several changes including updated and additional store hours for seniors / at-risk individuals, additional meal distribution services, and new housing resources.

SPANISH PUBLIC RESOURCE GUIDE

The Spanish language resource guide has been published for public access and can be found at the link above.

WORKGROUP PARTNERS

- Marshall Foundation
- Tahoe Magic
- Health & Human Services Staff
- El Dorado County Office of Education
- City of Placerville
- Cold Springs Church
- El Dorado Community Foundation
- Green Valley Church
- El Dorado County Food & Nutrition
- City of South Lake Tahoe



Workgroup Lead:

Patty Moley

ecs.COVID19@edcgov.us

530-642-4806

Meetings are now being held on an "as needed" basis. No meeting was held this week. New information is being shared through the ecs.COVID19@edcgov.us email.

CHILD CARE



Ensuring capacity to provide quality child care for El Dorado County's emergency and essential workforce.

FUNDING FOR CHILD CARE

El Dorado received an additional \$89,000 for additional financial support for care for children at risk and children of essential workers. People needing child care should contact Choices for Children for referrals.

SUPPLIES SECURED

The workgroup anticipates a shipment of critical health, safety and cleaning supplies to support additional cleaning and disinfecting necessary to maintain optimal levels of health and safety practices.

COMMUNITY SUPPLY SUPPORT

With the assistance of Dry Diggins Distillery – Aurum Sierra, Inc., hand sanitizer was distributed to many child care programs this week.

WORKGROUP PARTNERS

- El Dorado County Office of Education
- First 5 El Dorado
- Early Care and Education Planning Council
- Choices for Children
- Step by Step Early Learning Center
- Happy Kids Preschool and Day Care



Workgroup Lead:
Elizabeth Blakemore
eblakemore@edcoe.org
530-295-2312

HOMELESSNESS



Finding immediate ways to prevent and slow the spread of COVID-19 in homeless communities, and creating plans to mitigate the impact of infection on homeless individuals and families.

NEW OUTREACH APPROACH

The collaborative team changed their approach to outreach, locating a different location on Mondays, Wednesdays and Fridays and staying at one location on each day for several hours. This approach seems to engage more people, including those who are marginally homeless.

SURGE PLANNING

The workgroup met with the Sheriff's Advanced Planning Team to review plans for how to respond in the event of a surge of homeless individuals who test positive for COVID-19.

SECURED EMERGENCY HOUSING

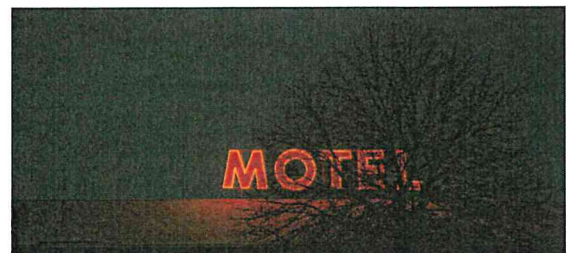
Friday 4/24, all contracts necessary to move forward with placing at-risk homeless individuals temporarily in motels was finalized. Placements should begin on Monday 4/27. The security contract is in the last stages of being finalized.

NEXT STEPS

Next week the workgroup plans to focus on the following:

- Reviewing and updating the list of high risk homeless individuals eligible for temporary emergency housing.
- Ensuring the groups continues to identify and document the vulnerable homeless individuals who are at risk of complications from contracting COVID-19.
- Reassess the effectiveness of the new outreach strategy.

Action Team Meeting held on 4/21 at 6 pm.
Meeting with the Advanced Planning Team on 4/24.



Workgroup Lead:

Martin Entwistle

mentwistle@marshallmedical.org

530-626-2868

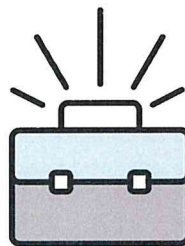
BUSINESS PROTECTION



The Business Protection Workgroup was established to compile information and best practices to support our local economy in economic recovery and resilience efforts.

NEW FOCUS ON REOPENING BUSINESSES

Conversations in the workgroup are beginning to focus on plans and how to provide assistance to businesses when they can reopen.



AID TO BUSINESSES

Since March 1st the El Dorado Community Foundation has granted \$252,622.50 back into the community in the form of both nonprofit support and immediate need support for families currently in crisis as a result of the COVID-19 pandemic.

WORKGROUP PARTNERS

- El Dorado County Economic Development Division
- El Dorado County Chamber of Commerce
- Golden Sierra Job Training Agency
- Lake Tahoe South Shore Chamber of Commerce
- City of South Lake Tahoe
- Tahoe Prosperity
- City of Placerville
- El Dorado Hills Chamber of Commerce
- El Dorado Community Foundation
- El Dorado County Fair Association



Workgroup Lead:
Tiffany Schmid
tiffany.schmid@edcgov.us
530-621-5132

Meetings are weekly on Wednesdays at 12 pm.

April 18 - April 24, 2020

COMMUNICATIONS

NEWS RELEASE



Chief Administrative Office
El Dorado County

EL DORADO COUNTY PUBLIC HEALTH OFFICER LETS STAY-AT-HOME DIRECTIVE EXPIRE
Residents guided exclusively by the Governor's Order except for extension of County's nonessential travel ban to the Lake Tahoe Basin

FOR IMMEDIATE RELEASE
April 28, 2020

Contact: Carla B. Hass
530-621-4609
916-293-2046

The Purpose of the Community Public Information Officer (PIO) group is to inform and share individual communications strategies, messaging tracks, and tools to better inform the public.

PRESS RELEASE FOR EXPIRING DIRECTIVE FROM HEALTH OFFICER

A press release was created with the Public Health Officer announcing that the Stay at Home Directive issued by the Public Health Officer would be allowed to expire on April 30th and how this affects current restrictions and guidelines.



EDUCATION & OUTREACH

As inquiries about reopening the county have increased, the Communications workgroup has worked to provide clear updates and information to the community through social media, press releases, and outreach

News and Press Releases can be found at

<https://www.edcgov.us/Government/hhsa/Pages/EDCCOVID-19-News.aspx>

WORKGROUP PARTNERS

- El Dorado County Sheriff's Office
- City of South Lake Tahoe
- City of Placerville
- Marshall Medical
- Barton Health
- El Dorado County Office of Education
- Shingle Springs Band of Miwok Indians
- Cameron Park CSD
- El Dorado Hills CSD
- El Dorado Irrigation District
- El Dorado County Health & Human Services Agency
- El Dorado Community Health Centers
- South Lake Tahoe Transit



Workgroup Lead:
Carla Hass
carla.hass@edcgov.us
530-621-4609

Meeting three times a week to share information and strategies.